

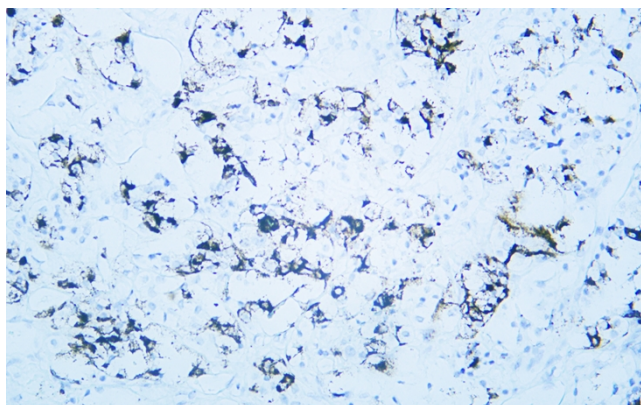


# Prolactin (ABT-PRL) mouse mAb

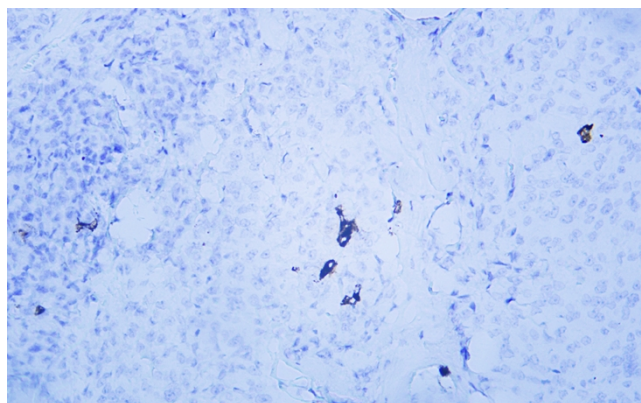
<b>Catalog No</b>	YP-Ab-15195
<b>Isotype</b>	IgG
<b>Reactivity</b>	Human
<b>Applications</b>	IHC;IF
<b>Gene Name</b>	PRL
<b>Protein Name</b>	Prolactin (PRL)
<b>Immunogen</b>	Synthesized peptide derived from human Prolactin
<b>Specificity</b>	This antibody detects endogenous levels of human Prolactin. Heat-induced epitope retrieval (HIER) TRIS-EDTA of pH8.0 was highly recommended as antigen repair method in paraffin section
<b>Formulation</b>	Liquid in PBS containing 50% glycerol, 0.5% BSA and 0.02% sodium azide.
<b>Source</b>	Mouse, Monoclonal/IgG1, Kappa
<b>Purification</b>	The antibody was affinity-purified from mouse ascites by affinity-chromatography using specific immunogen.
<b>Dilution</b>	IHC-p 1:100-500. IF 1:50-200
<b>Concentration</b>	1 mg/ml
<b>Purity</b>	≥90%
<b>Storage Stability</b>	-20°C/1 year
<b>Synonyms</b>	
<b>Observed Band</b>	
<b>Cell Pathway</b>	Secreted.
<b>Tissue Specificity</b>	Mammary gland,Pituitary,Testis,
<b>Function</b>	function:Prolactin acts primarily on the mammary gland by promoting lactation.,online information:Prolactin entry,similarity:Belongs to the somatotropin/prolactin family.,
<b>Background</b>	This gene encodes the anterior pituitary hormone prolactin. This secreted hormone is a growth regulator for many tissues, including cells of the immune system. It may also play a role in cell survival by suppressing apoptosis, and it is essential for lactation. Alternative splicing results in multiple transcript variants that encode the same protein. [provided by RefSeq, Aug 2011],
<b>matters needing attention</b>	Avoid repeated freezing and thawing!

**Usage suggestions**

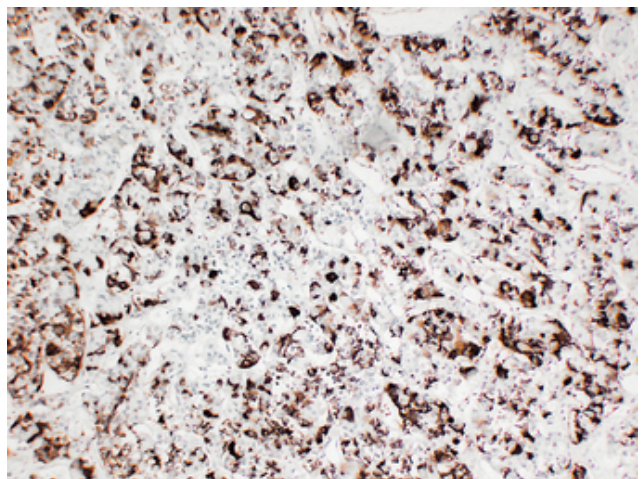
This product can be used in immunological reaction related experiments. For more information, please consult technical personnel.

**Products Images**

Human pituitary adenoma tissue was stained with Anti-Prolactin (ABT-PRL) Antibody



Human pituitary adenoma tissue was stained with Anti-Prolactin (ABT-PRL) Antibody



Human pituitary adenoma tissue was stained with Anti-Prolactin (ABT-PRL) Antibody